

TOP 5 MOST COMMON LABELING PROCESS PAIN POINTS

Whether large or small, some labeling process challenges are common to all companies.

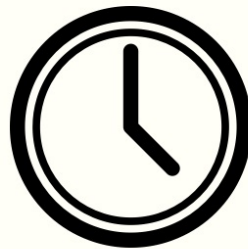
TEKLYNX, the worldwide leader in barcode label software, has conducted labeling assessment interviews to find out what the most common pain points in label design and printing are. Have you experienced these challenges?



#5 - High Costs

Errors

=



=



A difficult-to-use user interface often contributes to high rates of error. An end user on the production floor should have a simple user interface that allows them to input as little data as possible, and therefore print with fewer errors.

**CUT COSTS
BY 50%**

A lack of permissions settings can also result in high costs. If every person in the labeling process has an opportunity to cause an error, chances are that it will happen eventually. Permissions settings, available in TEKLYNX barcode label software products, prevent costly errors by limiting permission to only those who need it.

Some TEKLYNX users have found that streamlining their labeling process can save them up to 50%!

#4 - Technical Issues

When you're working with technology, one thing is certain - you'll run into technical issues sooner or later. When it happens, make sure you have a world-class technical support team to back you up.

The TEKLYNX Technical Support team is made up of professionally trained representatives just waiting to find solutions to any technical difficulty you come across.

"Within a few minutes, and I literally mean a few, Robert had the issue fixed. GREAT customer service. He took control of the situation and made us feel at ease immediately. Very professional."

— Charley Boley, US Cold Storage



87%

of callers surveyed said their TEKLYNX rep demonstrated:



Customer Focus



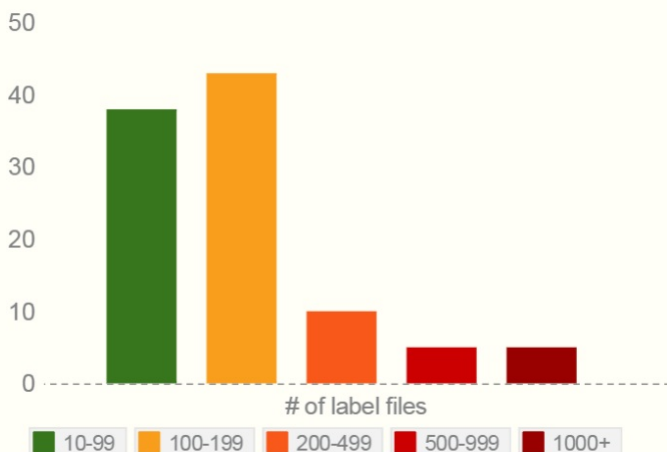
#3 - Too Many Label Files

62% of users surveyed have over 100 label files cluttering up their computer or server.

If your company makes more than 10 varieties of product (and we're betting it does), creating a new label for each one can clutter up your label directory fast.

Smart label design means creating a reasonable number of label templates that are automatically populated with variable data at print time.

Product labels, carton labels, shipping labels, etc. can all benefit from templates and variable data. TEKLYNX label design solutions offer label templates and database integration to simplify your label design process.



**Do you have a SERIOUSLY big labeling environment?
TEKLYNX Enterprise products might be for you.**

#2 - Wasted Time

When all these challenges add up, you end up spending a lot of time printing wrong labels, throwing those labels away, and printing new ones. Too much user interaction makes the whole labeling process inefficient, cumbersome, and error prone.

What can you do?



Minimize human interaction with your labeling environment



Implement database integration



Set up permissions



Try print automation

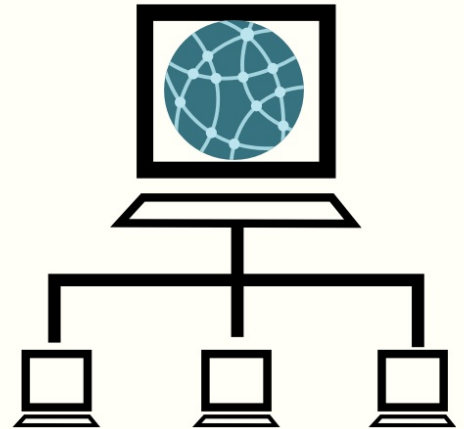


#1 - Lack of Database Integration

Many of these pain points have a commonality: too much room for human error and not enough automation.

Therefore, it makes sense that the most common labeling process pain point reported to TEKLYNX is the lack of database integration.

Chances are good that you're already using some sort of database in your organization. Whether it's an Excel spreadsheet or a full-blown Enterprise Resource Planning (ERP) system, TEKLYNX barcode label products can work with your database to pull variable data into your labels, including product information, order numbers, shipping addresses, and more.



Which of these pain points hit home for you?



Let us find the best solution for your needs. Contact TEKLYNX today.

Click here to request a free label design process assessment. A \$175 value!



Connect with us:

www.teklynx.com
(414) 837-4800
weblynx@teklynx.com

